

Specification

Electrical:

Current Rating Per Contact:

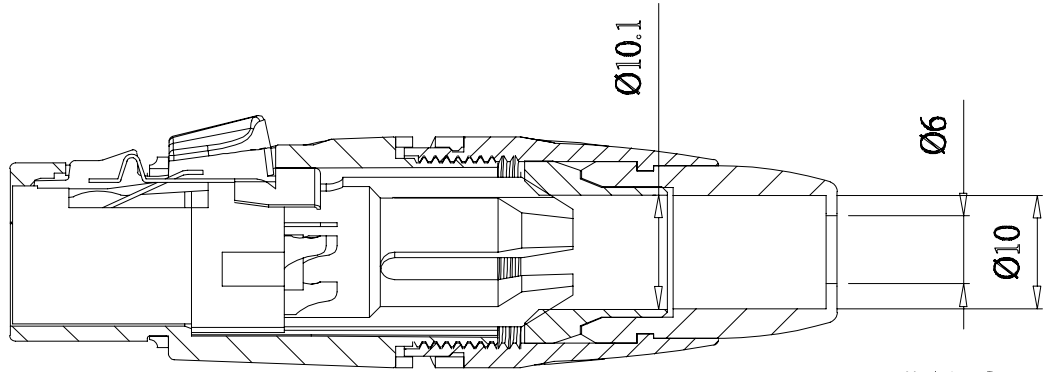
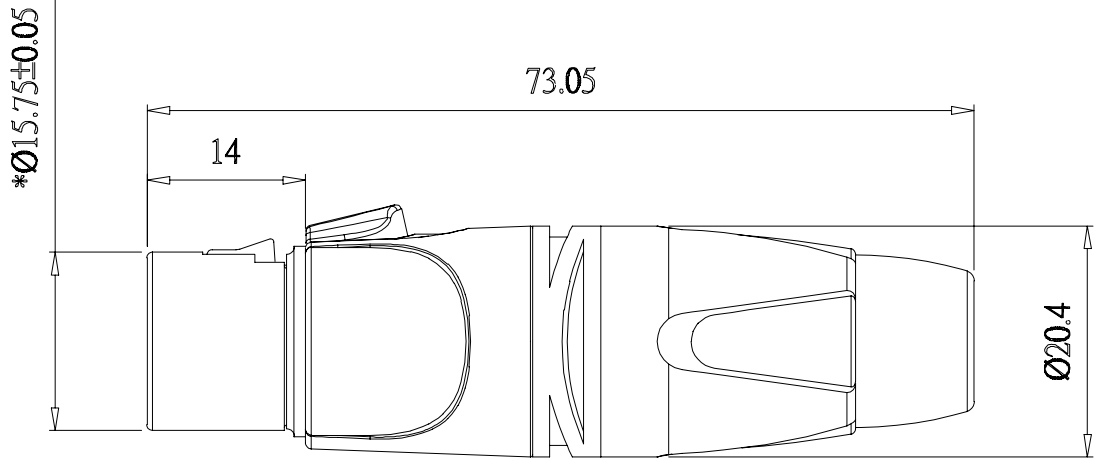
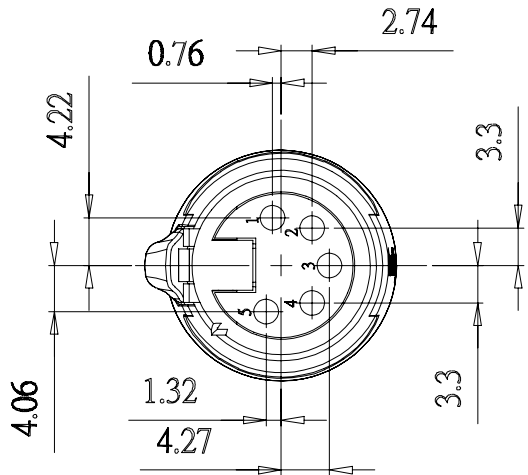
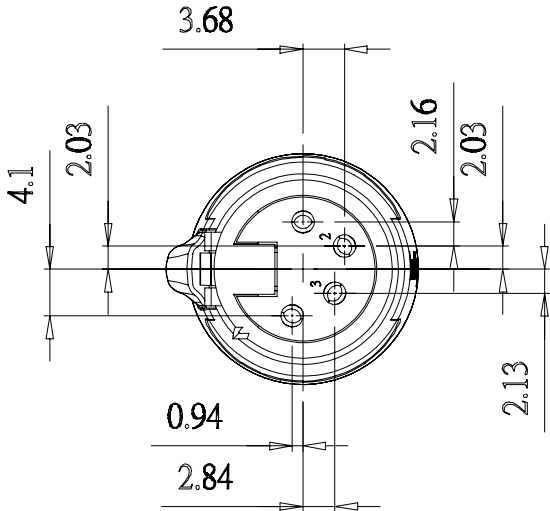
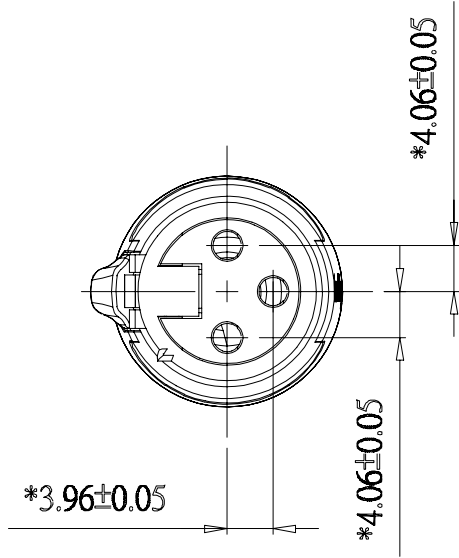
3 Pin	16A
4 Pin	10A
5 Pin	10A
Dielectric Strength:	1500VDC
Contact Resistance:	<3m Ohm
Insulation Resistance:	>2G Ohm
Capacitance Between Contacts:	
3 Pin	≤4Pf
4 Pin	≤7Pf
5 Pin	≤7Pf

Materials:

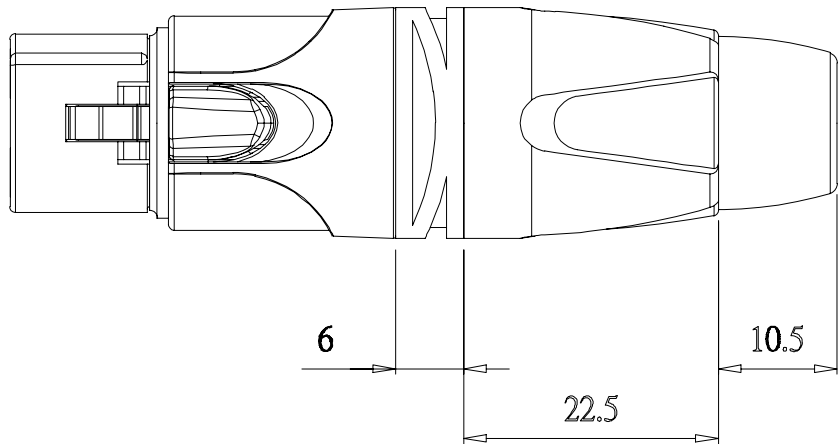
Body:	Zinc / Black Painted
Pin:	Phos. Bronze / Nickel

Environmental:


Mating Cycles:	>1000
Insertion Force:	≤20N
Outer Cable Dia.:	7-8.5mm
AWG:	
3 Pin	14AWG
4 Pin	16AWG
5 Pin	18AWG



Cable OD: Ø4 MIN.



REVISION HISTORY				
REV	DESCRIPTION	CHG REF	DATE	DESIGNER
1.0	Origin	-	23/Jul/2025	M. Smith

DO NOT SCALE		Third Angle Projection 	Designed by Martin Smith	X.X - +0.20	Design Right Protected	©2025	Date 23 Jul 2025	A3	
Unit of Measure: millimetres (mm)				X.XX - +0.10					X.XXX- +0.05
RoHS Compliant	Cambridge Electronic Industries Ltd	This document and all the data contained herein is and shall remain the property of Cambridge Electronic Industries Ltd and may not be used or copied for any purpose whatsoever without the written permission of Cambridge Electronic Industries Ltd.		Description: X Pin XLR-DMX socket with zinc black painted, cable mount, PhosBronze Nickel plated pin for cable between 7 - 8.5mm (Black gland)					
				Part No: AXCS-XS-ZPPN5-B					Issue 1.0