

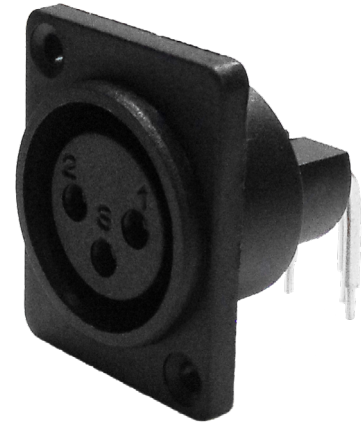
### General Description

This high quality 3 pin panel mount XLR socket features a square plastic shell constructed from PA-6 glass fibre reinforced material, providing outstanding strength, dimensional stability, and long term durability. Designed with right angle pins for direct PCB mounting, it offers a compact and reliable interconnect solution for space constrained applications.

The precision machined contacts are manufactured with a phosphor bronze interface with brass rear PCB pin which is entirely silver plated to ensure excellent conductivity, corrosion resistance, and extended service life. This connector is ideal for professional audio, broadcast, and industrial signal transmission environments.

#### Key Features:

- 3-pin XLR plug (male), panel-mount type
- Durable PA-6 glass fibre reinforced plastic shell
- Right angle pins for PCB mounting
- Precision-machined phosphor bronze and brass contacts with silver plating
- Excellent electrical performance and corrosion resistance



### Electrical

Current Rating	6A
Dielectric Withstanding Voltage	1500V DC
Contact Resistance	<5mΩ
Insulation Resistance	>1GΩ

### Processing

Temperature	-30°C to +80°C
Push Button	No
AWG	N/A

### Environmental

Insertion Force	≤20N
Mating Cycles	>1000

### Materials

Centre Pins	PhosBronze/Brass/ Silver
Body	PA-66 Glass Reinforced Nylon

