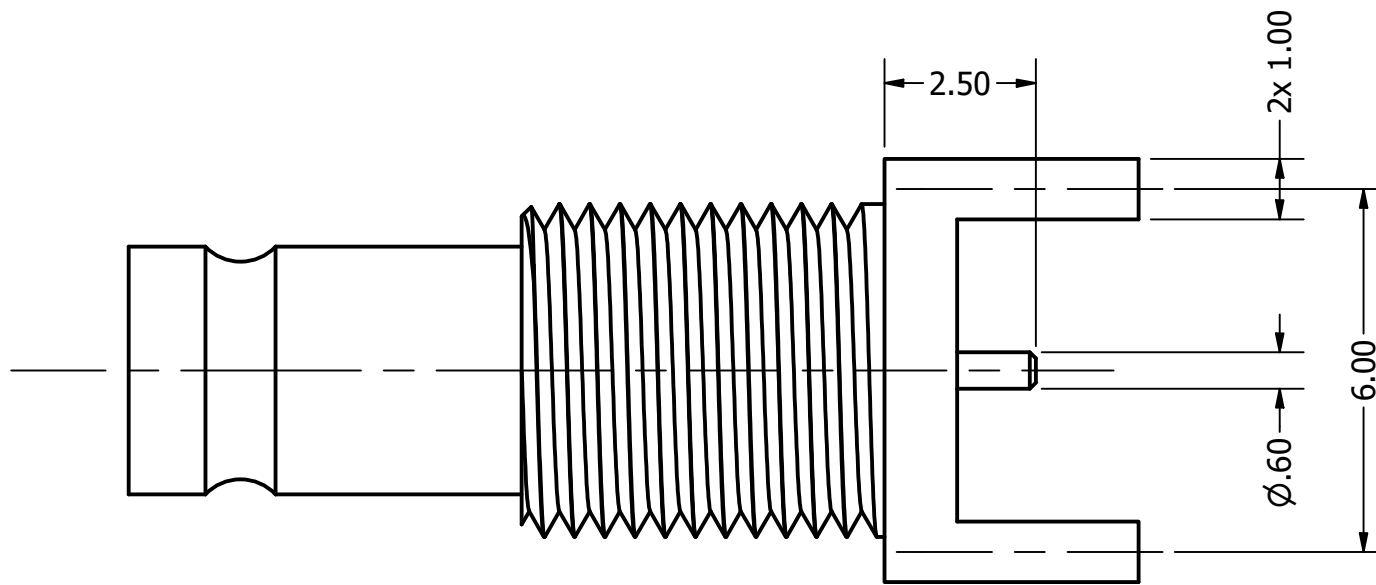
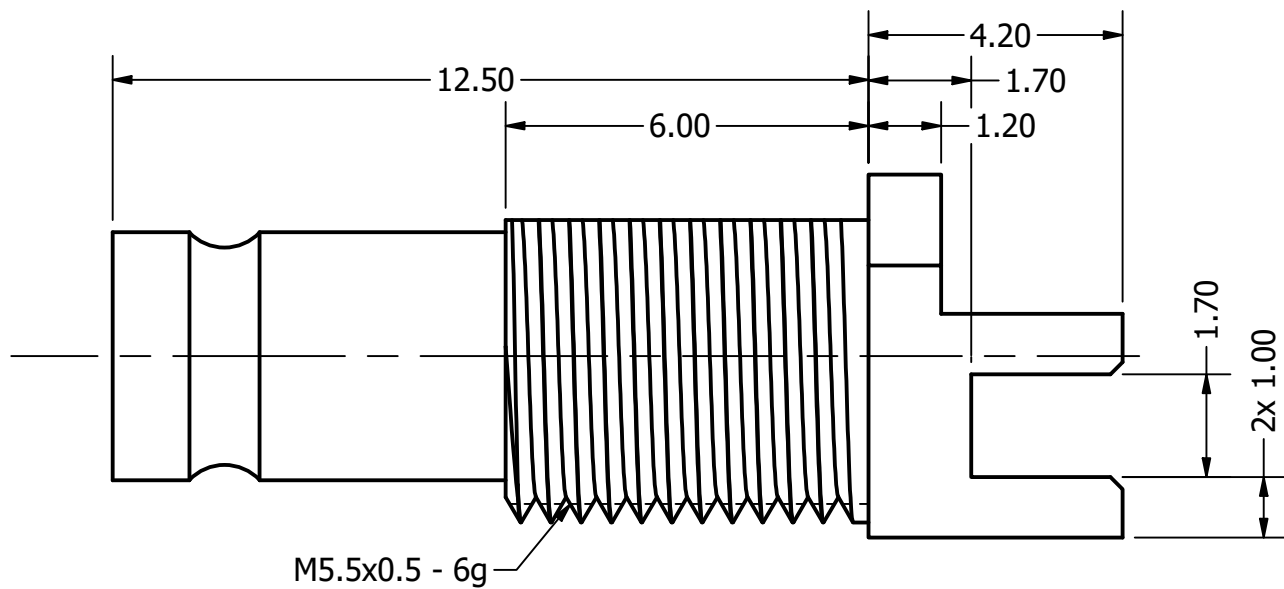
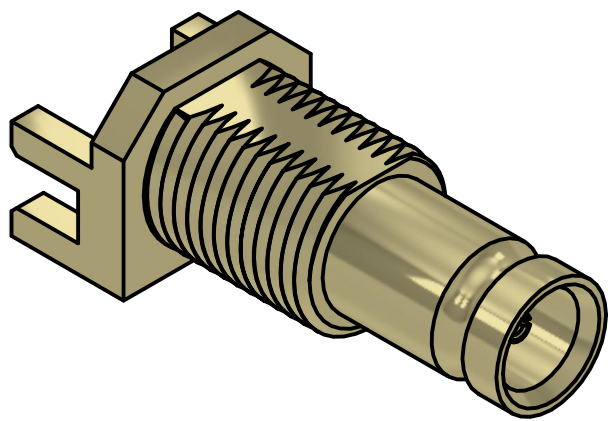


Recommended Panel Cut Out



| REVISION HISTORY | | | |
|------------------|-------------------------|-------------|---------------|
| REV | DESCRIPTION | DATE | DESIGNER |
| 3.0 | Updated P/N | 27 Jun 2024 | Peter Millard |
| 3.1 | Added Pade sizes to PCB | 18 Feb 2025 | Peter Millard |

| | | | | | | | |
|--|--|------------|--|--|--|---|-----------|
| Design Right Protected <small>Third Angle Projection</small> | Material: | | Finish: | | Gen Tol ±0.10 | DO NOT SCALE Unit of Measure: millimeters (mm) | |
| | Designed by P. Fayers | Checked by | Approved by | | ©2024 | Date 15/12/2011 | A3 |
| RoHS Compliant | CAMBRIDGE ELECTRONIC INDUSTRIES | | <small>This document and all the data contained herein is and shall remain the property of Cambridge Electronic Industries Ltd and may not be used or copied for any purpose whatsoever without the written permission of Cambridge Electronic Industries Ltd.</small> | | Description: 6GHz 75 ohm 1.0/2.3 Female Bulkhead Edge Mount Gold Plated Connector for 1.8mm PCB | | |
| | Part No: XGS-06-EB16-GG Cust | | | | Issue 3.1 | Sheet 1 / 2 | |

Electrical:

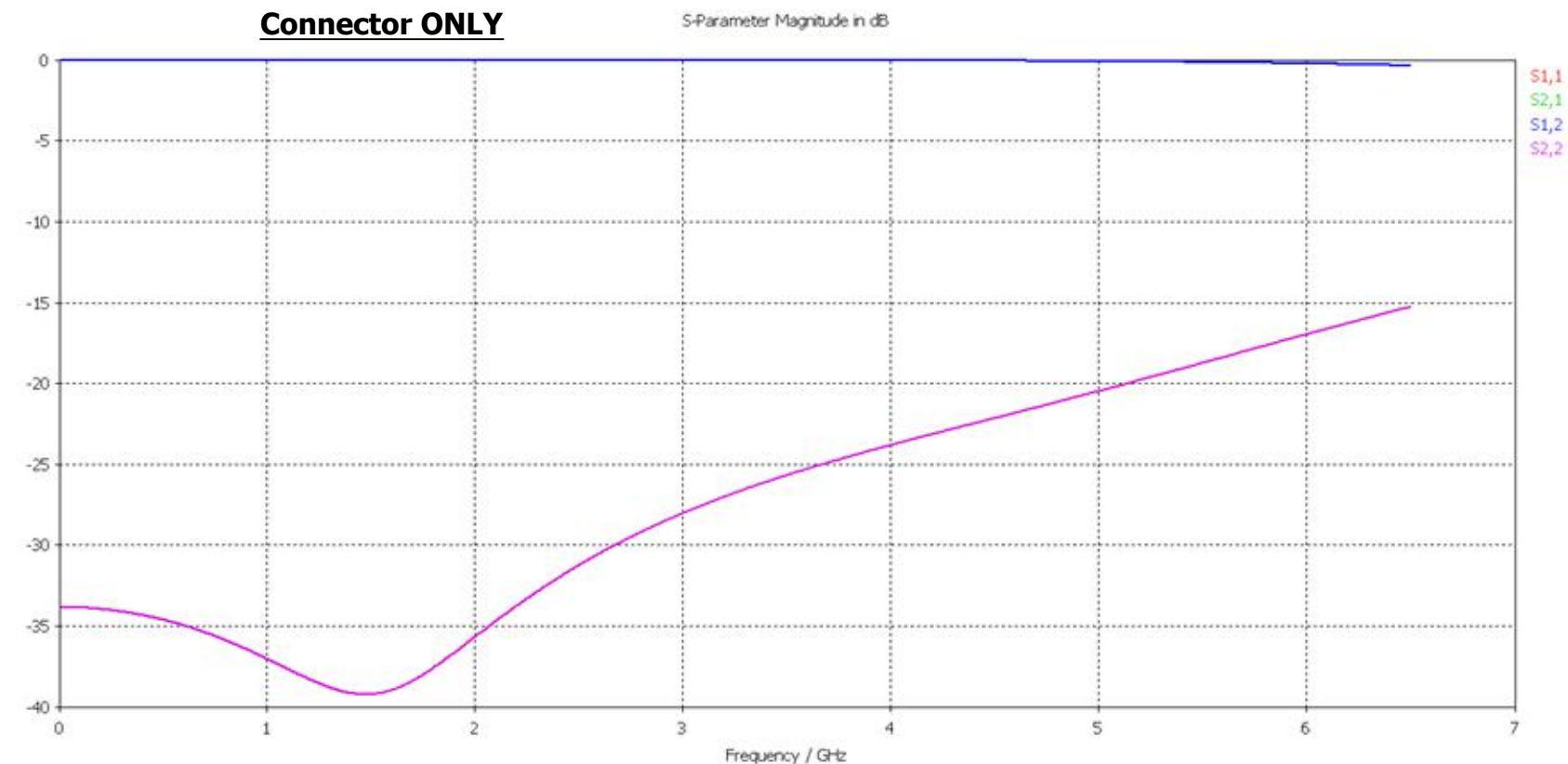
| | |
|---------------------------------|---|
| Impedance | 75 Ohms |
| Freq Range | 0-6.0 GHz |
| Working Voltage | 250 Vrms |
| Dielectric withstanding voltage | >750 Vrms |
| Reflection Factor (VSWR) | 1.10 Max 0.0-3.0 GHz 1.32 Max 3.1-6.0 GHz |
| Contact Resistance | Center Contact 4.0 m Ohm Outer Contact 2.5 m Ohm |
| Insulation Resistance | > 1000 Meg Ohm |

Materials:

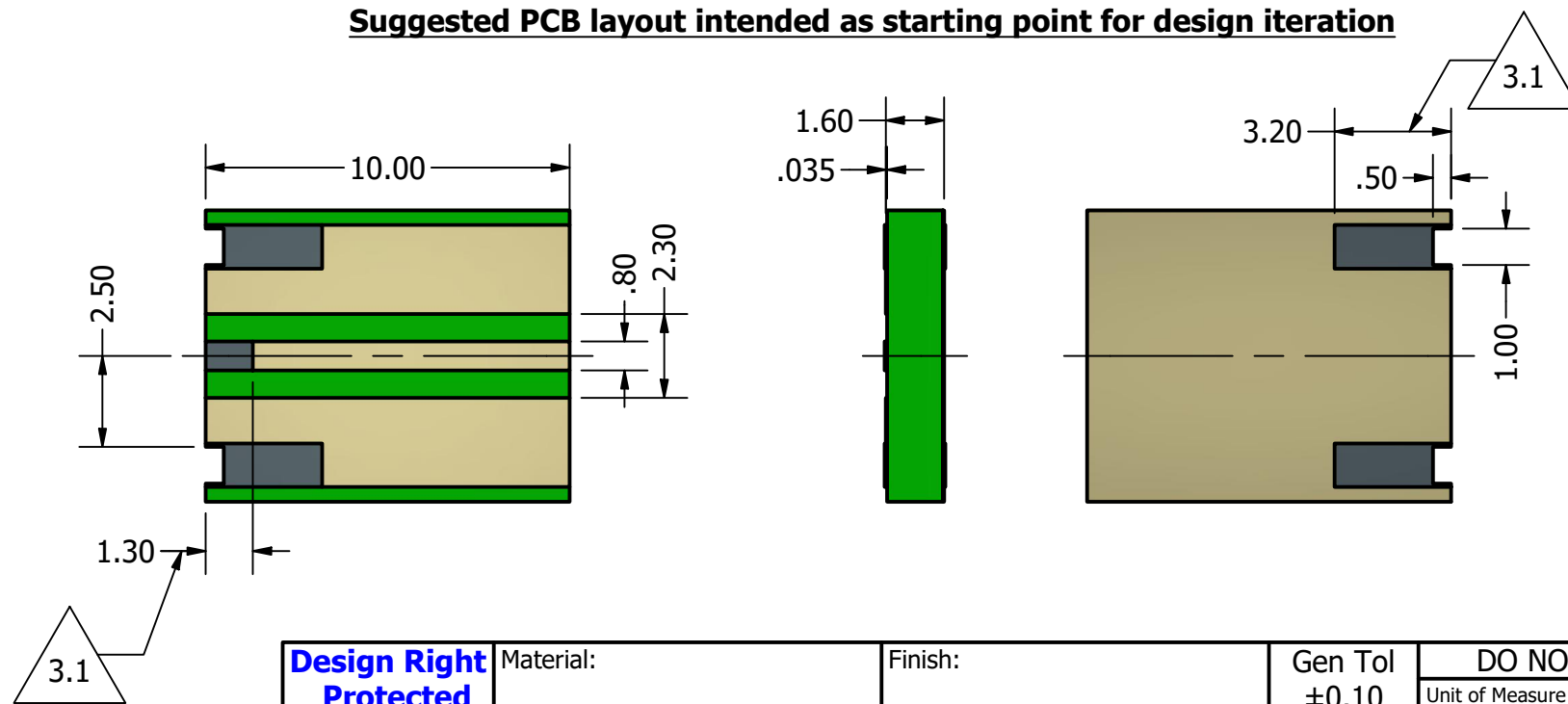
| | |
|-------------|-------------|
| Center Pin | BeCu/10μ Au |
| Metal Parts | Brass / Au |
| Insulators | PTFE |

Enviromental:

| | |
|----------------|---|
| Temp Ranges: | -65 to +85°C |
| Mating Cycles: | 500 |
| Vibration | MIL-STD202 Method 204 test condition B |
| Salt Spray | MIL-STD-202 Method 101 test condition B |



Suggested PCB layout intended as starting point for design iteration



| | | | | | |
|--|---------------------------------|--|--|--------------|----------------|
| Design Right Protected <small>Third Angle Projection</small> | Material: | Finish: | Gen Tol ±0.10 | DO NOT SCALE | |
| | Designed by P. Fayers | | | Checked by | Approved by |
| RoHS Compliant | | <small>This document and all the data contained herein is and shall remain the property of Cambridge Electronic Industries Ltd and may not be used or copied for any purpose whatsoever without the written permission of Cambridge Electronic Industries Ltd.</small> | Description: 6GHz 75 ohm 1.0/2.3 Female Bulkhead Edge Mount Gold Plated Connector for 1.8mm PCB | | |
| | | | Part No: XGS-06-EB16-GG Cust | Issue 3.1 | Sheet 2 / 2 |